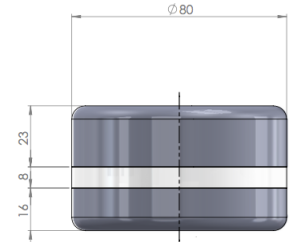
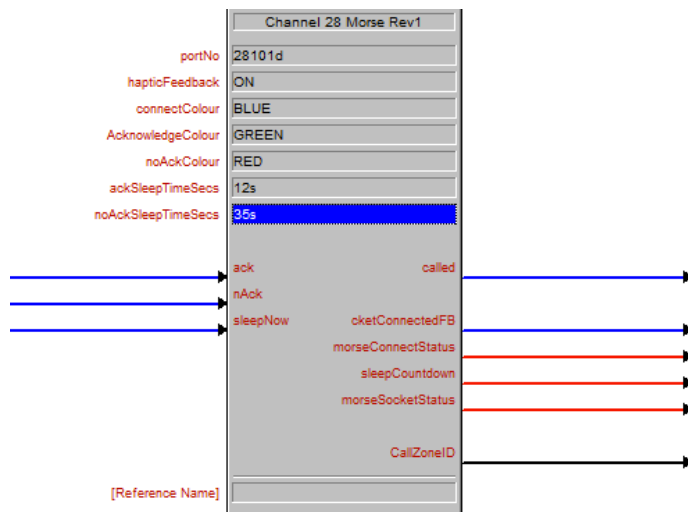


## Crestron Module - Channel 28 Morse Module



GENERAL INFORMATION	
<b>SIMPL WINDOWS NAME</b>	Channel 28 Morse Rev1
<b>VERSION</b>	1.0
<b>SUMMARY</b>	<p>This module receives incoming TCP connections from the Morse Paging Buttons.</p> <p>One instance of the module should be included for each button  <b>use a unique PORT number for each module</b></p>
<b>CRESTRON HARDWARE REQUIRED</b>	Crestron 3-Series Processor

PARAMETERS:	
<b>portNo</b>	A TCP/IP port as set in the Web Setup for the Morse Modules This should be unique for each unit, and be a non-standard port number
<b>hapticFeedback</b>	A Sets whether to use haptic feedback buzzer when pressed Valid Values [ON] [OFF]
<b>connectColour</b>	A Selects the Initial Colour for the LEDs on connection to the processor Valid Values [RED][GREEN][BLUE][MAGENTA][CYAN][WHITISH] default : [BLUE]
<b>AcknowledgeColour</b>	A Selects the colour for the LEDs sent when the ack digital signal goes high. Valid Values [RED][GREEN][BLUE][MAGENTA][CYAN][WHITISH] default : [BLUE]
<b>noAckColour</b>	A Selects the colour for the LEDs sent when the nAck digital signal goes high. Valid Values [RED][GREEN][BLUE][MAGENTA][CYAN][WHITISH] default : [BLUE]
<b>ackSleepTimeSeconds</b>	A Sets the time after ack digital signal goes high until the unit is sent to sleep (leds go out)
<b>noAckSleepTimeSeconds</b>	A Sets the time after nAck digital signal goes high until the unit is sent to sleep (leds go out)

**CONTROLS:**

<b>ack</b>	D	Sets the colour of the Morse to the AcknowledgeColour and starts the timer with the ackSleepTimeSeconds before sending the Morse to sleep Only valid once the Morse has made a connection
<b>nAck</b>	D	Sets the colour of the Morse to the noAckColour and starts the timer with the noAckSleepTimeSeconds before sending the Morse to sleep Only valid once the Morse has made a connection
<b>sleepNow</b>	D	sends the Morse into sleep immediately Only valid once the Morse has made a connection

**FEEDBACK:**

<b>called</b>	D	Goes high once the Morse makes a connection Stays high until the Morse disconnects
<b>socketConnectedFB</b>	D	Goes high to denote a valid TCP/IP connection on this module. (only needed for debugging)
<b>morseSocketStatus</b>	A	Analog Signal Showing Socket Status - follows standard Crestron notation for TCP/IP sockets (only needed for debugging)
<b>morseConnectStatus</b>	A	Analog signals showing status of negotiation with Morse Valid signals: 0 = waiting, 10 = initial connect, 1, 2 Negotiating, 5 Button Pressed (only needed for debugging)
<b>sleepCountdown</b>	A	Analog signal counting down in seconds until sleep (only needed for debugging)
<b>callZoneID</b>	S	Text String containing Call Zone name as in the Web Setup for the Morse Modules

Authored by:

**channel 28 Ltd**

Unit 11 , City Business Centre, 6 Brighton Road, Horsham RH13 5BB  
info@channel28.co.uk